



## Sage BusinessWorks Data Migrator

Sage BusinessWorks Accounting is an excellent product for small businesses that are just getting started. However, as your business grows, your accounting needs change. Sage Software understands the challenge of a growing business, which is why we offer a straightforward migration path to Sage MAS 90 and Sage MAS 200 ERP systems and to the next level of functionality.

Making a change from software that you are comfortable with is seldom easy. To help make the conversion process fast and simple, Sage Software has designed the Data Migrator to assist Sage BusinessWorks customers like you, in a painless change to Sage MAS 90 or 200 software. Enjoy all the benefits of increased functionality, customization capabilities, and flexible reporting without the need to re-key your important information. The Data Migrator can save valuable time and resources in today's fast-paced business environment.

The Conversion Guide is another helpful tool that can alleviate anxiety and minimize down time when converting data. The guide outlines the workflow differences between Sage BusinessWorks and Sage MAS 90, and correctly sets your expectations when converting your data.

Our nationwide network of qualified Sage MAS 90 and 200 Conversion Specialists have the exclusive rights to our special Data Migrator. Specialists can quickly accomplish data conversion to Sage MAS 90 and 200 from Sage BusinessWorks. (Check with your Conversion Specialist for the specific version of Sage BusinessWorks.) Not only can our Conversion Specialists demonstrate the flexible, intuitive, and customizable features available in Sage MAS 90 and 200, they can also minimize the time it takes to convert your data and make it operational on your new Sage MAS 90 or 200 system. Your data will be up and running on your new system in virtually no time.

Enjoy the advantage of staying within the Sage Software family of products. You can count on the same award-winning level of support and the comfort of working with the software leader for small to midsized businesses.

### THE DATA MIGRATOR CONVERTS:

#### General Ledger

- Charts of Accounts
- Budgets
- Balance Histories

#### Accounts Receivable

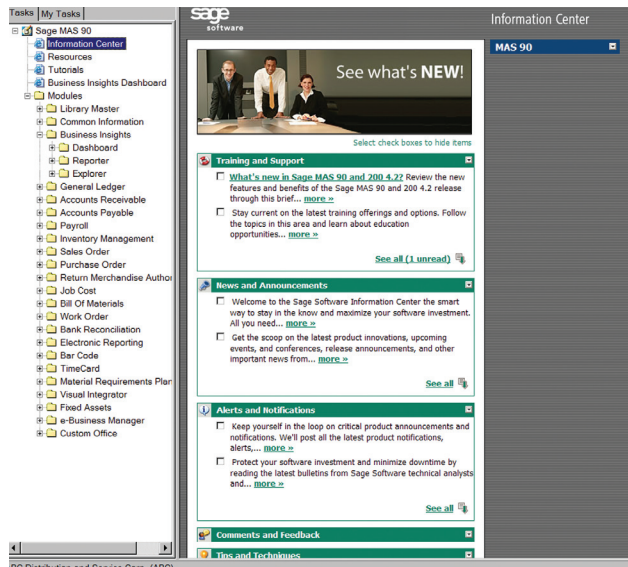
- Customer Masterfile
- Customer Contacts
- Open Invoices and Credit Memos
- Terms Codes
- Salespersons

#### Accounts Payable

- Vendor Masterfile
- Vendor Contacts
- Terms Codes
- Vendor 1099 Status
- Open Invoices and Credit Memos

#### Inventory Management

- Product Lines
- Warehouses
- Item Masterfile
- Locations
- Item Quantities
- Item Cost and Price Information



◀ Sage MAS 90 works the way you do. Use it to gain instant visibility across your business and turn data into actionable knowledge.

## FEATURES

<b>Conversion Specialists</b>	Our nationwide network of qualified conversion specialists has exclusive rights to the Data Migrator, to ensure a smooth conversion of your data.
<b>Conversion Guide</b>	Sage MAS 90–BusinessWorks Edition includes a Conversion Guide that helps answer common conversion questions.
<b>Limited Down Time</b>	Due to the Data Migrator's unique design, your Conversion Specialist will be able to test-run conversions without taking precious business time—this means minimal down time during migration.
<b>Ease of Use</b>	Sage MAS 90–BusinessWorks Edition was designed with growing businesses, like yours, in mind. It's no wonder Sage MAS 90 is recommended by more CPAs than any other midsized accounting software.
<b>Scalability</b>	Once you are using Sage MAS 90–BusinessWorks Edition and your business continues to grow, it's simple to expand your system and add more modular functionality, or even move up to client/server like Sage MAS 200 or Sage MAS 500.



End-to-end solutions. Expert advice.  
Ongoing support. That's Sage 360°.

Sage Software supports the needs, challenges, and dreams of 2.7 million small and mid-sized business customers in North America through easy-to-use, scalable and customizable software and services. Sage Software is a subsidiary of The Sage Group plc, a leading international supplier of business management software and services formed in 1981 and listed on the London Stock Exchange since 1989.



©2007 Sage Software, Inc. All rights reserved. Sage Software, Sage Software logos and the Sage Software product and service names mentioned herein are registered trademarks or trademarks of Sage Software, Inc., or its affiliated entities. All other trademarks are the property of their respective owners. 5MAS054 06/07 07-02752/0607